

# Envision the Future

A New Era of Data Platform Innovation





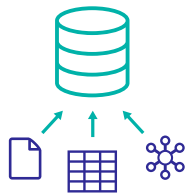
## Envision the Future

The future will belong to the innovators. To people who find new ways to harness the volume, velocity, and variety of data generated by the modern world. Powerful, smart applications will transform our lives, our businesses, and our society.

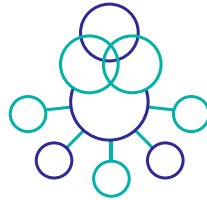
But applications are only as powerful as the platform on which they are based. InterSystems IRIS™ data platform makes it faster and easier to build real-time, data-rich applications that enable innovation and transformation. It mirrors our design philosophy that software should be interoperable, reliable, intuitive, and scalable.

InterSystems IRIS provides everything you need to create the applications that the modern world requires. It includes massively scalable and ultra-high-performance data management, flexible interoperability, and open analytics, all in a single reliable, secure, and easy-to-use platform.

## InterSystems IRIS Data Platform



**DATABASE**



**INTEROPERABILITY**



**ANALYTICS**

**INTUITIVE**



**RELIABLE**



**INTEROPERABLE**



**SCALABLE**



# Scalable Data Management

Today's data is big data. Or huge data. Or impossibly gargantuan data. Modern applications need to handle the nearly unimaginable volume, velocity, and variety that the modern world generates.

InterSystems IRIS is built around high-performance data management technology. It provides seamless high-speed SQL access to multiple data models. It enables real-time analytics on transactional data. And InterSystems IRIS is massively scalable, both vertically and horizontally.

## Unified, Multi-Model Database

Within InterSystems IRIS, data can be modeled and stored as tables, objects, documents, or multidimensional arrays. Such flexible data access enables you to ingest data from multiple sources, and use it in whatever form is best for your applications.

In addition, InterSystems IRIS includes unique text exploration technology that allows you to glean information from unstructured textual data based on the data itself — no need for pre-determined dictionaries or ontologies.

## Multi-Workload

InterSystems IRIS is so fast, it enables analytics on transactional data. There is no longer any need to maintain separate operational and analytic databases. Your applications can give users real-time insights into the data.

## Massive Scalability

All InterSystems products enable vertical scalability through parallel SQL processing and use our unique Enterprise Cache Protocol (ECP) to horizontally scale the number of users your applications can handle. To these capabilities, InterSystems IRIS adds sharding, which greatly increases horizontal scaling of data. With InterSystems IRIS, your applications can efficiently process enormous transactional and analytic workloads on enormous volumes of data, on commodity servers, on premise or in the cloud.



## A CASE FOR SCALABILITY

Of course, every industry can benefit from scalable applications, but the field with the most demanding scalability requirements may be financial services.

Consider a large investment firm or bank. They must collect trade information from multiple exchanges in real time, analyze trends, instantly assess the risk of their clients' positions, and enable their traders to take appropriate actions. In addition, they must save terabytes of data in order to comply with a wide range of regulations.

It is not unusual for an investment firm to maintain multiple data stores — one for collecting market data as it floods in, one for analyzing a day's worth of data, one for keeping a week's or month's worth of data, and one for storing a subset of all the collected data forever. By leveraging the scalability and multi-workload capabilities of InterSystems IRIS, financial services organizations can eliminate latencies, maintain fewer data stores, streamline operations, and reduce operational risk.





---

## Flexible Interoperability

In today's highly connected world, no solutions can stand alone. At the very least, they must be capable of bi-directionally sharing data with the world around them. Ideally, a modern application can leverage data and functionality from disparate sources to provide new ways of improving the lives of people across an entire region or industry.

InterSystems IRIS includes a full-fledged interoperability engine. It provides a library of extensible and customizable adapters for commonly used applications, technologies, and protocols. It has graphical editors for data transformations and business process orchestration. It supports business rules, human workflow, and end-to-end management of integrated solutions. In short, InterSystems IRIS enables you to connect data, applications, people, and processes in record time.



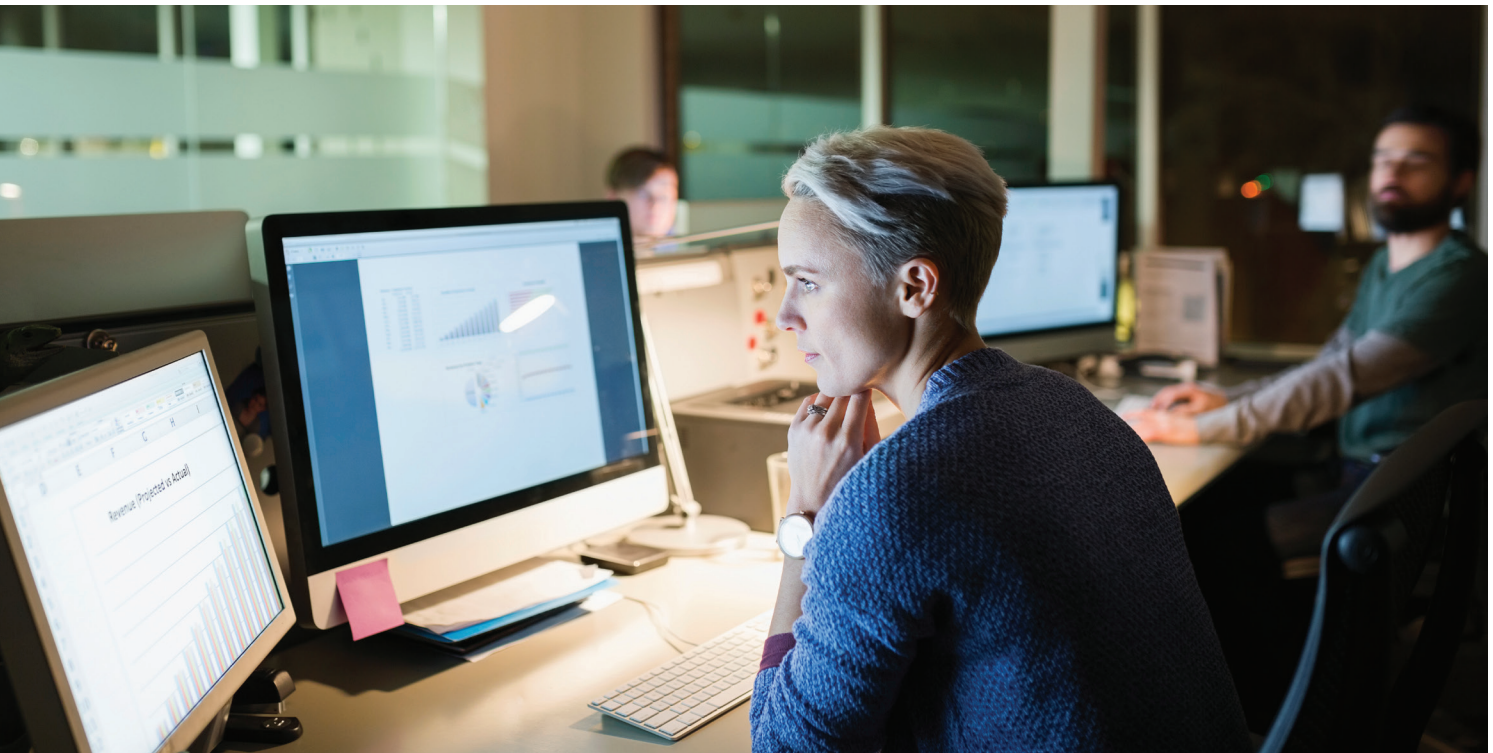


## A CASE FOR INTEROPERABILITY

When you think of fields that might benefit the most from flexible interoperability, healthcare instantly springs to mind. Just consider how many healthcare professionals may need to know all or part of your medical history in order to provide you with the best possible care. (And consider all the times you've sat down with a clipboard to give it to them.) Consider all the different kinds of medical data, both structured and unstructured, that may be part of your personal history.

Because of its flexible interoperability, InterSystems IRIS is ideal for building solutions that combine and leverage healthcare information, putting all pertinent information in front of caregivers whenever and wherever they need it.





## Open Analytics

The term “analytics” covers a lot of ground. It can refer to anything from real-time dashboards to data mining to machine learning and predictive analytics. Your applications may benefit from using specialized, best-of-breed tools for different analytic functions. You need a data platform that can support them all.

In addition to built-in analytics capabilities for structured and unstructured data, InterSystems IRIS is an open analytics platform that enables you to use whatever tools you wish as you help your users make better decisions. InterSystems IRIS comes with a connector to the Apache Spark analytics framework.



## A CASE FOR OPEN ANALYTICS

The Internet of Things (IoT) refers to networks of devices or machines that produce a continuous stream of data — much of which must be analyzed in real time. Increasingly, many organizations are leveraging the Internet of Things to improve operations and outcomes. For example, in manufacturing, sensors may continuously measure key parameters, see how they are trending, and compare results with historical data. Manufacturers can predict when a process is about to result in products that do not meet specifications and take corrective actions before problems occur.

With its ability to handle large scale transactional and analytic workloads, InterSystems IRIS is ideal for IoT applications.





## Using InterSystems IRIS

We've designed InterSystems IRIS with developers in mind. It reduces the complexity involved with building, deploying, and upgrading your applications.

### Cloud Deployment

InterSystems IRIS supports flexible deployment options in public (Amazon Web Services, Microsoft Azure, Google Cloud Platform), and private clouds. Although it is designed for “cloud-first” deployment, InterSystems IRIS can also be deployed on-premises and in hybrid architectures.

### Containers

A container is a lightweight wrapper around a software solution and everything needed to run it. InterSystems IRIS leverages containers (for example, Docker containers) in two important ways: to simplify the provisioning and deployment of your applications in the cloud, and to enable a DevOps approach to application development.

### DevOps

DevOps is a style of building solutions whereby changes and upgrades cycle iteratively through development, testing, and production environments, resulting in continuous improvement and the ability to react quickly to the needs of the marketplace. Such an approach requires strict version control. Using containers ensures that the exact same version of your upgraded application is used throughout its life cycle.

# The InterSystems Experience

When you become an InterSystems client, you gain a technology partner with a 40-year history of excellent customer service. We are passionate about helping you succeed.

## Learn the Way You Want

InterSystems Learning Services is dedicated to helping you get the most benefits from our products. Our classroom and online learning, as well as a vibrant developer community, enable you to tailor your learning to fit your exact needs.

Learn more at **Learning.InterSystems.com**

## We Do Support Differently

We provide expert technical assistance to our customers 24 hours a day, every day. We maintain support advisors in 15 countries around the world so every one of our clients immediately gets help – in their local language – from somebody who is highly qualified and who really cares.

### Our Pledge to You

We respond quickly.

**You set the priority of your issue.**

We put our best people on the front line.

We will spend as much time as necessary working on your problem.

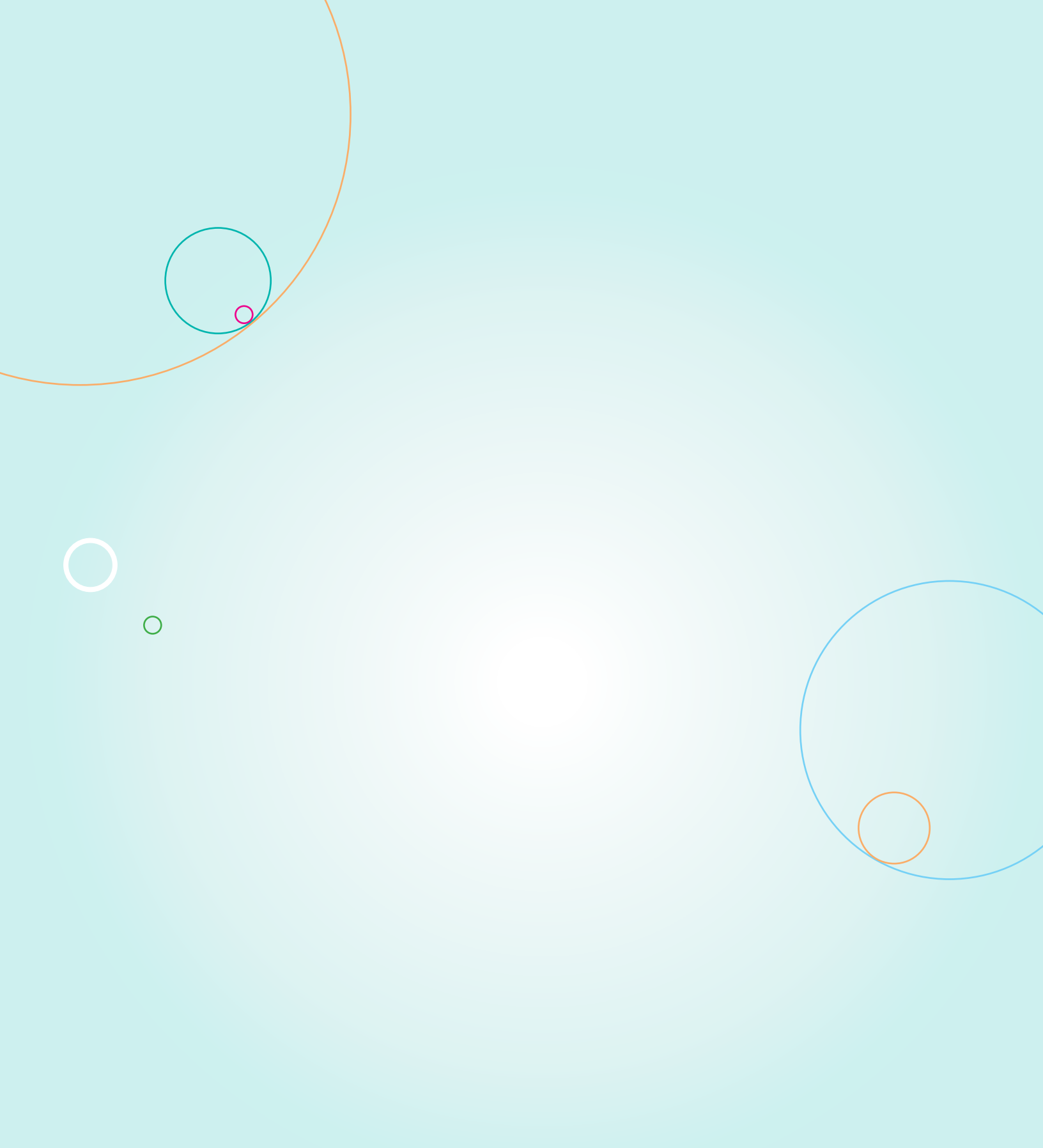
**You determine when an issue is closed.**

We follow up to ensure your satisfaction.

Our support staff is seeking a “WOW!” reaction from every encounter.







The power behind what matters.

